

**SIR ARTHUR LEWIS COMMUNITY COLLEGE
DIVISION OF AGRICULTURE**

**ASSOCIATE DEGREE IN GENERAL AGRICULTURE
2008/2009 ACADEMIC YEAR
END OF SEMESTER 2 EXAMS**

COURSE

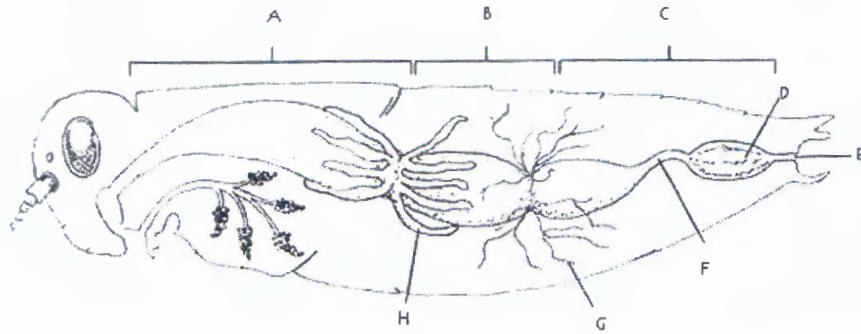
CROP PROTECTION (CRP212)

Date: 11th May 2009

Duration: 2 ½ Hrs.

DO (FIVE) QUESTIONS

1. (a) Define the term Crop protection.
(b) Discuss the importance of pests.
2. Discuss the factors which make insects "**formidable**".
3. Farmer John wishes to cease growing fruits and vegetable because of their frequent attacks by **fungal** diseases, discuss the symptoms which the farmer would likely be presented with.
4. (i) Define the term **weed**.
(ii) Identify 4(four) important weeds of Caribbean.
(iii) Discuss (4) four methods of weed management.
5. Wing shape, texture, and venation are quite distinctive among the insect taxa and are useful for identification.
 - (i) Which insect orders show the following wing modifications?
a.. Elytra b. hemelytra c. tegmina d. halteres
 - (ii) Identify the mouth parts of the following orders
a. Coleoptera b. Diptera c. Orthoptera d. Isoptera



6. The diagram above shows the digestive and excretory system of an insect
- (i.) Identify parts labeled A-H
 - (ii.) List the functions of F, D and E



- b. (i) Identify the parts of the insect leg labeled A-E
- (ii) Identify 2 types of leg modifications and highlight the orders in which they are typical.

7. a. With aid of a simple diagram explain the disease triangle.
- d. Explain the principle/concept of **Knoch's Postulates**